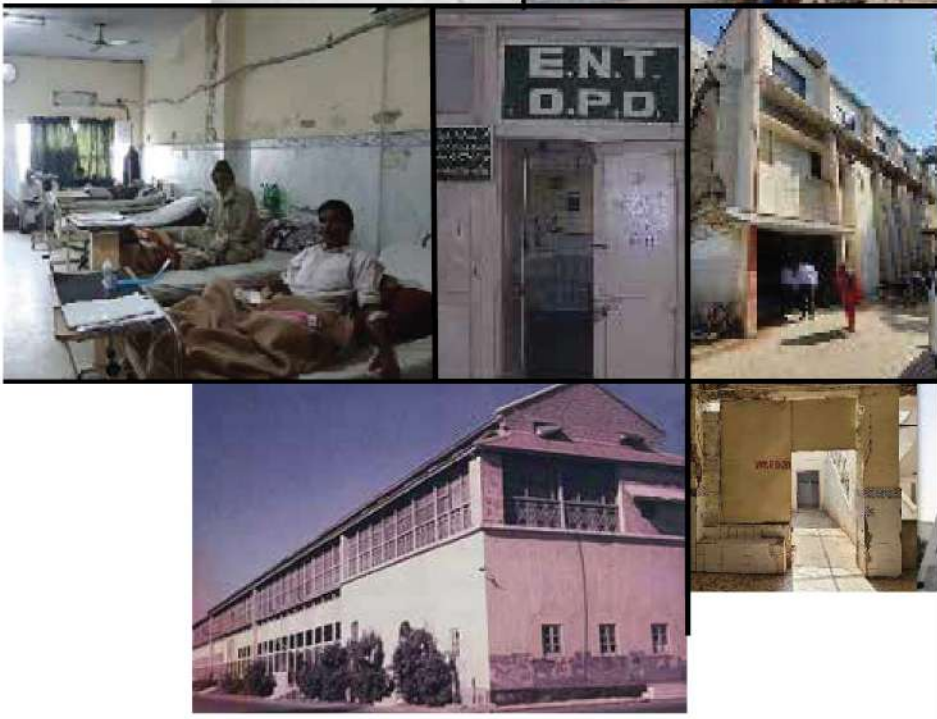




1993 Onwards



**OUR JOURNEY TO A
SILENT
HEALTHCARE
REVOLUTION**

1993 - 2024

THE UNTOLD STORY OF
ANNUAL REPORT 2024



**PATIENTS' AID
FOUNDATION**

JPMC





PATIENTS' AID REVOLUTION

Rising Population &
Migration
Overwhelmed
Karachi's Largest
Public Hospital,
Affecting Healthcare
for the Marginalized



Jinnah Postgraduate
Medical Centre (JPMC):
A Beacon of Health and Hope
Since Pakistan's
Independence



**PATIENTS' AID
FOUNDATION**

JPMC



**From Humble Beginnings to Pakistan's Most
Advanced Public Healthcare Center:**

Patients' Aid continues to Transform JPMC into
a modern public Healthcare with World class
facilities— Our Journey Continues!

Amidst Despair, A Beacon of Hope:

In 1990 Karachi's Philanthropists
United to Revolutionize JPMC and
founded The Patients' Aid Foundation"

**OUR STORY OF
TRANSFORMATION**



From Brain Tumor to Productivity Ayjaz Khan's story.

18 years old Ayjaz is a resident of Landhi living in a rented house with his old parents. Being the only son he was the sole bread winner for his family. However, for the past four years, Ayjaz had been experiencing intense headaches that significantly impacting his productivity. Once able to provide for his family, he couldn't continue to work, watching helplessly as financial hardships piled up. His days were filled with debilitating headaches, persistent vomiting, and a heavy heart as he struggled to hold onto hope.



Two months ago, the symptoms became unbearable, and his friends bought him in emergency at Jinnah Postgraduate Medical Centre (JPMC). Imaging tests, including a CT scan and MRI, revealed hydrocephalus—a dangerous condition caused by a colloid cyst blocking the flow of cerebrospinal fluid in his brain. The diagnosis was devastating, but it also marked the beginning of Ayjaz's journey toward healing.

Thanks to the compassionate support of the Patients' Aid Foundation, Ayjaz received the life-saving care he desperately needed—all at no cost. He underwent a complex right frontal craniotomy and the skilled surgeons at JPMC successfully removed the cyst. Since then his recovery has been remarkable and follow-up CT scan confirmed that he was free of tumor.

With tears of gratitude, Ayjaz expressed,

I feel truly blessed to be receiving the advanced treatment for my brain tumor at the Surgical Complex of JPMC. May Allah bless the doctors, staff and donors of Patients' Aid for enabling the treatment by constructing this modern Surgical Tower with state of the art equipment at JPMC for marginalized patients.



Free Dialysis for a Precious Life Hafsa's story.

Hafsa Riaz, a 21 years old, resident of Mohammadi Mohalla, Banaras Town, Karachi, always dreamt of becoming a teacher and despite all challenges life threw at her she has shown the strong will to never surrender. She lost her beloved father at a very young age of 3. Her mother managed to work as a domestic helper in order to provide for Hafsa and her three small children. The family's support now rests upon her older brother who earns Rs.15,000 a month barely enough to put food on the table for a family.

Despite these challenges, Hafsa was determined to pursue her education and proudly completed her matriculation in 2021. However, her path was disrupted when she was unfortunately diagnosed with the nephrotic syndrome commonly known as FSGS- Focal segmental glomerulosclerosis, which leads to chronic kidney disease. The doctor of a private hospital told the family that she would need dialysis twice a week to live, which was an unattainable cost for the family already in struggle.



But hope came in the darkest hour. One of Hafsa's relatives told the family about the free dialysis facility at JPMC revamped and fully supported by Patients' Aid Foundation. Thanks to the generosity of compassionate donors, Hafsa has access to life-saving treatment, dialysis machines, and essential medicines—all free of charge.

Despite the physical and emotional toll of her condition, Hafsa's spirit remains strong. She now works part-time as a teacher at a local school, determined to make a difference in the lives of others.

Hafsa's Message:

“I want to express my heartfelt gratitude to Patients' Aid and its generous donors who have made my treatment possible, that has given me the strength to remain a productive member of the society. Without your kindness, I would not be able to pursue my dreams or support my family.”



Table Of Content

1. Introduction	02
2. Vision & Mission	03
3. Chairman's Massage	04
4. Governing Structure / Organization Chart	5/6
5. Board of Governance / Sub Committee of Board	7/8
6. Revolutionizing Public Healthcare: The Way We Work	10
7. Stories of Strength Major Achievements in 2023/24	11
8. Events and Highlights	14
9. Foot print & Segment Review	18
10. Fundraising & Marketing	40
11. Financial Data	43
12. Audit & Compliance	47
13. Future Goals	48
14. Pledge you Support	49

OPD Complex

OPD Complex

Jinnah OPD



اوپي ڈی کمپلیکس



Government
of Sindh

Muhammad Yasin Malik
OPD Complex
JPMC



Introduction

Welcome to the Patients' Aid Foundation Annual Report 2023-24. This year, we proudly reflect on our continued journey of healthcare revolution at JPMC and our unwavering dedication to improving health outcomes for underserved communities with dignity and respect. Over the past year, our passionate team, selfless volunteers, and invaluable partners have worked tirelessly to provide critical healthcare services, raise awareness through health education, and champion policies that promote equitable access to care across Pakistan.

This report celebrates our accomplishments, outlines future initiatives, and shares the heartfelt stories of individuals whose lives have been profoundly impacted by our efforts. Guided by our motto, "Humanity Meets Healthcare," Patients' Aid has transformed JPMC into Pakistan's most advanced public healthcare center—a beacon of hope for patients from Karachi, interior Sindh, Balochistan, and beyond. Through a robust partnership with JPMC officials and the Government of Sindh, the Foundation has tirelessly worked to serve the most vulnerable segments of society who cannot afford medical care. Patients' Aid Foundation has centered its efforts around providing modern & patient friendly infrastructure, state of the art medical equipment and trained workforce. It was a long journey, but presently we humbly claim Jinnah Hospital as Pakistan's most advanced public healthcare centre and is a beacon of hope for the patients and their families.

Our initiatives span state-of-the-art facilities, such as the Jinnah OPD & Surgical Complex (550 bed surgical unit with 18 modular operation theaters), A.I integrated Cyberknife Robotic Cancer Surgery, Tomotherapy, Radiology, Blood Bank, Gynae & Obstetrics, Ophthalmology, Chest Ward, Accident & Emergency (A&E), Medical ICU, Dermatology, Oncology & Radiotherapy, Psychiatry, Neurology, Neurotrauma, PET CT and Nephrology & Dialysis departments, ensuring modern and compassionate care.

Patients' Aid Foundation has been at the forefront of providing world-class healthcare, serving an astounding 12,000 patients daily in OPDs and 5,000 patients in the Accident & Emergency Department—representing 75% of emergency cases in Karachi. During the fiscal year 2023-24, the Foundation facilitated treatment for 3,120,000 patients in the OPD, conducted 12,703 free dialysis sessions, supported 21,270 women through safe and quality childbirth, performed 782,000 free radiological diagnostic procedures, and provided 142,331 patients with essential healthcare services, including free medicines and critical support.

Patients' Aid has transformed the shape of JPMC through improving present & creating new systems, funding massive infrastructure, renovating existing buildings, introducing new equipment and employing quality human resource. The work of Patients' Aid Foundation focuses on strengthening health services, providing capacity building, and influencing government policy under Public – Private partnership operating module.

VISION

To provide world class free healthcare services to all

MISSION

To seek and channel donations towards providing free medical care through investment in infrastructure, technology and human resources.

OUR VALUES

Integrity – to show strong moral principles and righteousness

Respect – to show admiration and regard towards its donors

Excellence – to show optimal levels of output in its operations

Compassion – to serve the masses with a deep sense of empathy

Dignity – to focus solely on humanity without any biasness



Chairman's Message

As we present this year's annual report, I am filled with immense pride and gratitude for the remarkable progress Patients' Aid Foundation has made in our mission to improve localized health outcomes. This year has been a testament to the power of dedication, collaboration, and the unwavering spirit of our team, donors, volunteers and partners.

Despite the challenges posed by an ever-changing political and country specific health landscape, we have continued to provide worldclass healthcare services to the most vulnerable populations. Our innovative healthcare revolution at JPMC initiatives we have touched with millions of lives, offering not just medical care, but hope and empowerment. From COVID-19 to the treatment of flood victims, our impact is felt in vulnerable communities.

I am pleased to highlight the pivotal role that public-private partnerships have played in advancing the mission of Patients' Aid Foundation over the past year. These collaborations have been instrumental in expanding our reach, enhancing our capabilities, and driving sustainable impact in the communities we serve. Through these strategic alliances, we have been able to scale our initiatives, innovate our approaches, and improve the quality of care provided to those in need.

None of this would be possible without the generous support of our donors and the tireless efforts of our medical and management staff and volunteers. Your belief in our mission fuels our work and propels us forward. Together, we are not just responding to health crises; we are building resilient health systems and nurturing healthier futures.

As we look ahead, we remain committed to our vision of a world where quality healthcare is a reality for all. We are excited about the opportunities to expand our reach, deepen our impact, and continue our journey towards health equity.

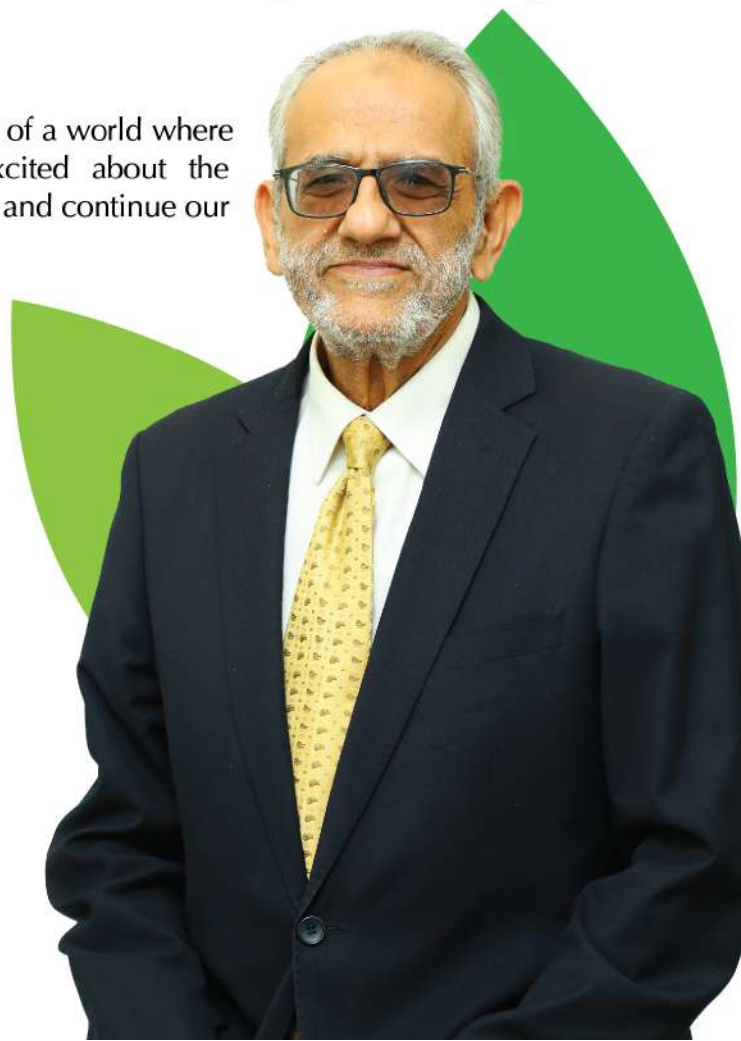
I extend my deepest gratitude to our partners for their unwavering support and dedication. Together, we are building a healthier, more equitable Pakistan. Thank you for being a part of this vital work. Together, we are making a difference.

With sincere gratitude,



Mushtaq.K. Chhapra

Chairman, Patients' Aid Foundation

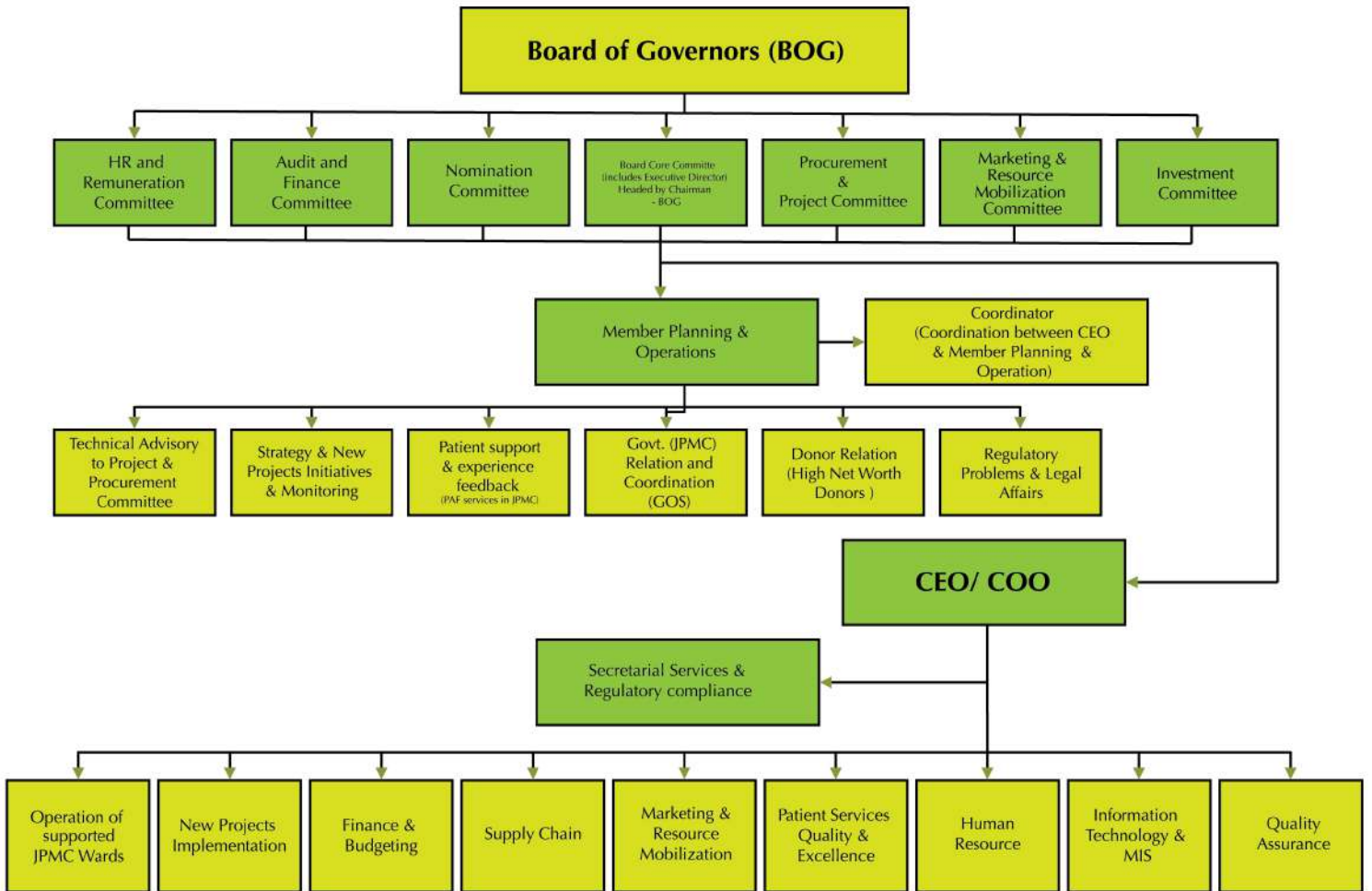


Governing Structure



Patients' Aid Foundation – JPMC was officially registered on 1st December, 1993 with the Societies Registration Act XXI of 1860 with a mission to provide quality healthcare accessible to all the deserving patients who visit JPMC in hopes of getting treatment

Organization Chart



Board of Governors

Mr. Mushtaq Chhapra

Mr. Chhapra has been engaged in welfare and community activities from an early age. He is the founding member of some of the most successful welfare initiatives in Pakistan including The Kidney Center, the Patients' Aid Foundation-JPMC and The Citizen's Foundation.

Ms. Spenta Kandawalla

Ms. Kandawalla has been actively associated with i-Care Foundation, Layton Rehmatullah Benevolent Trust, Captain Foundation, Liaquat National Hospital, the Jinnah Society and the Patients' Aid Foundation-JPMC.

Ms. Shaheen Suleman

Ms. Shaheen has worked in the rural areas of Sindh organizing dispensaries, health camps, schools and maternity homes. She is presently the Honorary Secretary General of the Patients' Aid Foundation-JPMC

Mr. Yunus Bengali

Mr. Bengali is engaged in projects of public importance at The Indus Hospital & Pakistan Memon Jamaat. He has served the Patients' Aid Foundation-JPMC in various positions and is presently, the Honorary Treasurer of the organization.

Mr. Atif Bokhari

Mr. Bokhari has been involved with the private sector programs for the improvement of health and education in Karachi. He also serves at the Patients' Aid Foundation-JPMC and the Kidney Center.

Mr. Sarfaraz Rehman

Mr. Rehman is deeply interested in playing his part in giving back to the society. He has been associated with the Patients' Aid Foundation-JPMC, Shaukat Khanum Hospital and the World Wild Fund (WWF).

Ms. Shahnaz Wazir Ali

Ms. Wazir Ali has represented Pakistan at international conferences and national seminars on education, health, women development, population, and poverty alleviation. Presently, she is a member of the Board of Governors at the Patients' Aid Foundation-JPMC.

Mr. Ali Jameel

Mr. Jameel has been long associated with Patients' Aid Foundation-JPMC. He has held several advisory posts in the Board of Investment, Economic Advisory Council and Pakistan's IT and Telecommunication sectors.

Mr. Shabbir Diwan

Mr. Shabbir has been associated with Pakistan Business Council, Pakistan-India Joint Business Council, the Government of Pakistan and Memon Medical Institute (MMI) Hospital. He is actively involved in various capacities at the Patients' Aid Foundation-JPMC.

Sub-Committees Of The Board

Core Committee

HR & Remuneration Committee

Audit and Finance Committee

Marketing & Resource Mobilization Committee

Projects & Procurement Committee

Investment Committee

Registrations

- Societies Registration Act XXI of 1860
- Federal Board of Revenue (FBR) as a Non-Profit Organization
- Certified by Pakistan Centre of Philanthropy

Corporate Affiliation

- Jinnah Postgraduate Medical Centre (JPMC)
- The Government of Sindh (GoS)



Revolutionizing Public Healthcare: The Way We Work

At Patients' Aid, our holistic approach to healthcare delivery is grounded in three core pillars: infrastructure development, provision of skilled medical personnel, both doctors and para-medical staff and equipping facilities with the latest medical technology. These elements are critical to ensuring that we provide comprehensive and world class care to the communities we serve.

Infrastructure Projects

Building and renovating healthcare facilities is a fundamental aspect of our work. We believe that a robust infrastructure is essential for delivering effective healthcare services. Our projects range from constructing new buildings at JPMC to upgrading existing facilities to meet modern standards. By focusing on infrastructure, we aim to create welcoming, safe, and efficient environments where patients can receive the care they need. These projects not only improve access to healthcare but also enhance the overall patient experience and outcomes.

Provision of Doctors, Paramedic Staff and General Operating expenses

Healthcare delivery is only as strong as the team providing it. At Patients' Aid, we ensure that JPMC facilities are staffed with trained doctors, nurses, and paramedics who are dedicated to serving the community. We recruit skilled professionals who are not only experts in their fields but also share our commitment to compassionate care. Continuous training and professional development are integral to our approach, ensuring that our staff remains at the forefront of medical knowledge and practices. This commitment to excellence in staffing enables us to offer a broad range of medical services and respond effectively to the diverse health needs of the population we serve.

Effective management of operating expenses is crucial to ensure the smooth and efficient functioning of JPMC departments/wards as part of our program delivery. At Patients' Aid we prioritize meticulous financial planning and resource allocation to meet the diverse needs of each department, ensuring they can deliver the highest standard of care to patients.

Medical Equipment

In today's rapidly evolving medical landscape, access to the latest technology is crucial for accurate diagnosis and effective treatment. We invest in state-of-the-art medical equipment to ensure our patients receive the best possible care. From most advanced diagnostic tools to modern surgical instruments and state of the art medical devices, our facilities are equipped to handle a wide array of medical conditions. By incorporating cutting-edge technology into our operations, we enhance the capabilities of our healthcare professionals and improve patient outcomes.

Together, these components form the backbone of our comprehensive approach to healthcare. By integrating infrastructure development, expert staffing, and advanced medical equipment, Patients' Aid is able to deliver high-quality, accessible healthcare services, in collaboration with Sindh Government at JPMC that meet the needs of the communities we serve. Our work is driven by a commitment to health equity, ensuring that everyone, regardless of their background or circumstances, has access to the care they deserve.

Stories of Strength – Major Achievements in 2023/24

The past year has been a transformative period for Patients' Aid, marked by significant achievements in infrastructure development, the initiation of new projects, and the addition of state-of-the-art medical equipment. These milestones reflect our unwavering commitment to improving healthcare access and quality for underserved communities. Here are some of the outstanding accomplishments:

Infrastructure Development

One of our most significant achievements has been the completion of a new OPD & Surgical Complex at JPMC. This state-of-the-art facility houses, OPD clinics and operation theaters providing comprehensive care to thousands under one roof. The Complex includes multiple specialized departments, fully equipped operation theaters including one modular theater with dedicated spaces for doctors and para medics.

In addition, we have renovated several existing wards/departments of JPMC, ensuring they meet modern standards of care. These renovations included upgrading sanitary facilities, expanding patient waiting areas, and installing reliable power and water supplies. By enhancing these facilities, we have created more welcoming and efficient environments for both patients and healthcare providers.





Patients' Aid Projects

The following new project have been completed by Patients' Aid Foundation at Jinnah Postgraduate Medical Centre (JPMC)

- Accident & Emergency
- Blood Bank Building Renovation
- Gynae & Obstetrics Department
- Neonatal ICU Facility at Gynae ward
 - Nephrology – Dialysis area
 - OPD of Dental Department
 - OPD & Surgical Complex
 - Plastic Surgery, OT & Ward
- Psychiatry & Neurology Building
 - Radiology Ward Renovation
 - Thalassemia Ward
 - Urology Ward Renovation



Addition of New Medical Equipments

To enhance the quality of care provided, we have invested in cutting-edge medical equipment across JPMC facilities. Notably, we acquired advanced diagnostic imaging systems, including digital X-ray and ultrasound machines, which have greatly improved our diagnostic capabilities. These tools enable our medical staff to detect and treat conditions more accurately and efficiently.

We also introduced portable ventilators and other critical care equipment to our emergency services, ensuring we are better equipped to handle acute medical emergencies. This equipment has already saved numerous lives, particularly in our emergency and intensive care units.

We have added third and most advanced A.I integrated unit of Cyber Knife, second unit of advanced Tomotherapy machine and modern laboratory equipment that allows for rapid and precise testing of various pathogens.

CONCLUSION

These achievements underscore the resilience and dedication of our team and the unwavering support of our partners and donors. Each milestone is a testament to our collective effort to create lasting change and improve health outcomes for all. As we celebrate these successes, we remain committed to pushing the boundaries of what is possible in healthcare, ensuring that every individual has access to the care they need and deserve.

Events & Highlights - 2023/24

- Inauguration of Psychiatry & Neurology building and Nephrology ward 2022/23.
- Inauguration Operation theatres of Surgical Complex - 2022/23.
- Renovation of Gyne & Emergency wards - 2023/24.
- Inauguration of Neonatal ICU facility at Gyne ward - 2024.
- Inauguration of New Cyberknife S-7 FIM 3rd unit - 2024. (Funds provided by Sindh Govt).
- Cyberknife-1 de-commissioned - 2024.
- Installation of second and more advanced unit of Tomotherapy in progress - 2024.
- Construction of Medical Tower, comprising 8 floors, in progress - 2024.
- Govt. of Sindh provided grant of Rs.640 Million 2022/23/24 for the maintainance of Cyberknife Tomotherapy/PET-CT.
- Upgradation of Blood Bank building in progress for uplifting of façade. Renovation of first and second floors to accommodate Plastic Surgery, Dental Unit, Faciomaxiliary, and Thalassemia wards completed. Upgradation and renovation of clinical laboratory/waiting area, CSSD and laundry at ground floor in progress.
- Construction of Lecture Hall at Surgical Complex in progress.
- Agreement with NICVD signed for the completion of their OPD building.
- Construction of a new 8 Floor Trauma Tower is planned near Accident & Emergency Dept JPMC.
- Rabia Rasheed Soorty building in progress.
- Donation receipts for the year 2023/24 have shown 14% increase over last year.
- Surplus of receipts over expenses for the year 2023/24 is Rs.445M compared to Rs.669M of last year.
- Profit on investment for the year 2023/24 is Rs.737M compared to Rs.680M last year.
- Ramadan Zakat collection in 2023/24 has increased to Rs.193M compared to Rs.169M from last year.
- Bike A Cause / Fund Raising Event was organized for Thalassemia patients.

Year 2023-24 Events and Highlights



Inaugration of Operation theatres
of Surgical Complex.



Inaugration of Neonatal ICU Facility
at Gyne ward



Cyberknife-1 has been de-commissioned.



Inaugration of of Psychiatry & Neurology
building & Nephrology Department's Dialysis Area.



Renovation of Gyne & Emergency wards.



Inaugration of New Cyberknife S-7 FIM, 3rd unit.



Installation of Second and more advanced unit of
Tomotherapy in progress.



Construction of Medical Tower, comprising 8 Floors is under construction.



Upgradation of Blood Bank building in progress for uplifting of façade. Renovation of first and second floors to accommodate Plastic Surgery, Dental Unit, Faciomaxillary, & Thalassemia Wards completed.



Construction of Lecture Hall at Surgical Complex is in progress.



Construction of Rabia Rasheed Soorty building in progress.



Govt. of Sindh provided grant of Rs. 640 Million for the maintenance of Cyberknife & Tomotherapy / PET CT.



Upgradation and renovation of clinical laboratory/waiting area, CSSD and laundry at ground floor in progress.



Agreement with NICVD signed for the completion of their OPD building.



A new 8 floor Trauma Tower is planned near Accident & Emergency Dept. JPMC.



Donation receipts for the year 2023/24 have shown 14% increase over last year.



Surplus of receipts over expenses for the year 2023/24 is Rs. 445M compared to Rs. 669M of last year.



Profit on investment for the year 2023/24 is Rs. 737M compared to Rs. 680M last year.



Ramadan Zakat collection in 2023/24 has increased to Rs.193M compared to Rs.169M last year.



Bike A Cause / Fund Raising event was organized for Thalassaemia patients.

Foot Print of Patients' Aid Foundation at Jinnah Postgraduate Medical Center (JPMC)

- Accident & Emergency
- Blood Bank
- Chest Ward
- Clinical Oncology
- Clinical Pathology - Main Lab
- Cyberknife
- Healthcare
- Jinnah Food Complex
- Medical ICU 4
- Nephrology
- Neurology
- Neurotrauma
- OPD & Surgical Complex
- Ophthalmology
- Obstetrics & Gynaecology
- PET-CT Cyclotron
- Psychiatry ward
- Radiology
- Stroke Unit
- Tomotherapy



Accident & Emergency

JPMC has the largest medical emergency service in the city, which makes Accident & Emergency the most critical department of the hospital. This department caters to life threatening cases having legal and criminal implications, which no other hospital is willing to accept. Patients' Aid JPMC is generously contributes towards this department, which is mostly struggling with the ever-increasing number of emergency patients against its limited resources, through the support of its kind donors. Patients' Aid has built 3 contemporary operation theaters equipped with latest machinery, a well-structured lift for providing emergency patients an efficient access to operation theaters, centralized chiller and bedding facility for male and female wards, an expansive waiting area for the attendants and visitors, 3 drinking water dispensers and also takes the responsibility of the maintenance expenses of the department.

In 2023/24:

1,825,000 Patients
provided emergency
medical treatment





Blood Bank

Blood Bank at JPMC is the flagship project of Patients' Aid Foundation which is listed as the third largest blood bank in Pakistan. Patients' Aid has taken the responsibility to run blood drives all around the year for collecting pints of blood. It has installed an effective system to screen blood, in accordance with the WHO standards, for various infections and create a thorough blood profile. It has also equipped the blood bank with modern machinery to safely preserve blood for maximum usage. Blood bank dispenses approx. 250 pints of blood daily to various medical departments of JPMC including Accident & Emergency, Gynea & Obstetrics and Medical ICU.



In 2023/24:

57,701 Donors donated blood

936 Plasma (Phe) performed.



Chest Ward

Pulmonary health remains a major concern, especially in males due to increased consumption of tobacco and smokeless tobacco consumption in the public. Patients' Aid has constructed a new building for the Chest Ward in place of the old decrepit building with a capacity of 120 beds. An ICU has also been built with both male and female wards, equipped with latest technology to cater more patients. Patients' Aid-JPMC employed 33 personnel which includes paramedical and supporting staff to carry out operations efficiently and it also bears the cost of medical and diagnostic tests performed on the patients. The 1st floor has been dedicated to MDR TB (Tuberculosis). Pakistan is estimated to have the 4th highest prevalence of multi drug-resistant TB (MDR-TB) globally. The condition has been developed in patients due to delay in diagnosis, inadequate and unsupervised medication, poor follow-up and particularly lack of financial resources to continue the treatment. One of our benevolent donors, helped us in setting up a 13 bedded MDR-TB Ward dedicated to treat patients with complicated TB cases, free of cost

In 2023/24

2,977 Patients were
treated





Clinical Oncology

Patients' Aid has closely worked with JPMC officials and the Government of Sindh to improve and expand operations of the department. Patients' Aid has invested in the infrastructure of the oncology department to include OPDs, consultant rooms and waiting area to cater more patients. It has also created a dedicated day-care for chemotherapy which caters to at least 50 patients per day. Patients' Aid has also worked extensively to improve radiotherapy facilities Clinical Oncology where we have increased capacity of Cobalt 80 Unit which was installed by the Government of Sindh. Cobalt Therapy is widely used radiotherapy to treat cancer by killing cancerous tumor tissues.

In 2023/24:

104,000 New patients
treated in Oncology OPD

14,527 Patients provided
Chemotherapy

10,127 Patients provided
Radiotherapy





BLOOD BANK, JPMC

بلڈ بینک (جے۔ پی۔ ایم۔ سی)



IN COLLABORATION WITH PATIENTS' AID FOUNDATION



Clinical Pathology – Main Lab

Main lab is the central pillar of JPMC. Patients' Aid has introduced a Laboratory Integrated System (LIS), making JPMC the only public hospital to have this system for recording, managing and storing clinical data. Patients' Aid has introduced an Emergency Laboratory, Central Lobotomy, and a molecular PCR Lab providing round-the-clock services. It also started diagnostic testing for Hepatitis B and C to help reduce the Hepatitis epidemic in Pakistan. Immunology section is the recent addition to study and research on human immune system. Patients' Aid has significantly increased the capacity of tests done to almost 20,000 special and 200,000 routine tests every month. The main lab was selected by the quality assurance center of WHO Eastern Mediterranean Regional Office for its efficiency and also achieved outstanding recognition at National Quality Assurance Standards (NQAS), and External Quality Assurance Scheme (EQAS), London, UK.



In 2023/24.

2,908,594 Lab tests performed



CyberKnife

CyberKnife Robotic Cancer Radio surgery, a cutting-edge technology, uses high cancer killing dose of radiation in a precise, painless, and non-invasive manner. Patients' Aid, with the help of its generous donors has installed 2 CyberKnives at JPMC, one of which is the latest addition, that serves approx. 25 patients per day. JPMC is the only hospital in Pakistan offering this treatment and the only hospital in the world providing it free of cost. The actual cost for one treatment internationally goes up to \$5,000-\$9,000

In 2023/24

463 Patients treated
along with
1,836 Sessions





Healthcare Department

Patients' Aid has introduced Healthcare Department with staff to assist patients arriving at JPMC and to guide them to respective departments. It also runs a pharmacy to provide life-saving medication free of cost, issue medical material and facilitate patients in various diagnostics and medical tests.

In 2023/24

109,073 Patients
provided free medicines
& needed support





Jinnah Food Complex

Patients' Aid-JPMC initiated a mega project, Jinnah Food Complex (JFC) to feed the less privileged public that walks through the gate of JPMC each day. Patients' Aid has been able to establish this expansive food facility through the help of its compassionate donors. Jinnah Food Complex (JFC) provides hygienic complimentary meals to patients and their attendants. JFC comprises of 3 sections namely, Main Kitchen, Ta'am Gah and Food Court. Food Court, is also providing healthy meals at affordable rates, primarily to hospital staff including doctors, healthcare workers, and visitors of JPMC

In 2023/24:

218,280 Patients & attendants provided with free meals.

1,000 staff and patient attendants are provided Sehri & Iftar every day in Ramadan





Medical ICU 4

Patients' Aid, with the help of its generous donors has constructed a building with 60 bedded facility which includes HDUs (high dependence units) and ICUs (intensive care units) with ventilators and cardiac monitors. The maintenance cost of this building and its equipment is borne by Patients' Aid. During the COVID-19 pandemic, MICU was converted to Corona Isolation ward which was providing PCR testing to at least 150 visitors per day providing treatment to the affected patients.



In 2023/24

3,999 Patients treated



Nephrology

Nephrology Ward at JPMC has been transformed by Patients' Aid Foundation into a specialized unit where patients with kidney- problems are treated and managed. The department provides critical care, long-term management, and specialized treatments for patients with conditions like chronic kidney disease (CKD) along with provision of free Dialysis for those in need, acute kidney injury (AKI), kidney stones, hypertension, glomerulonephritis, and kidney transplants. One of the essential aspects of the nephrology ward is the dialysis unit, where patients with severe kidney failure receive hemodialysis or peritoneal dialysis. Kidney biopsy facility is also available for patients with end-stage kidney failure along with medication management and nutritional support.

The nephrology ward is staffed with a team of healthcare professionals, including senior nephrologists, nurses, dietitians, social workers, and other specialists.



In 2023/24:

12,703 Dialysis performed

1,134 Lithotripsy kidney stone removal laser surgeries performed.



Neurology-Neuro Medicine

The weight of neurological disorders is increasing in Pakistan, mainly due to the urbanization. Karachi has the highest rate of urbanization in the country which contributes to unplanned and unmanaged migration, adding to the city's urban slums, poverty and inequality. JPMC has seen a constant increase of patients coming in with complaints of epilepsy, tetanus, hypertension, autoimmune diseases etc. In recognizing this need, Patients' Aid-JPMC has provided its support through employing quality human resource and installing medical equipment at the neurology department. A Plasmapheresis machine has been installed by Patients' Aid-JPMC which treats the affected plasma from the blood of the patients.

In 2023/24:

54,825 Patients treated in OPD

1,491 Patients admitted

936 Plasma Pheresis performed

2,848 EEGs performed





Neurotrauma

A traffic surveillance survey showed that 1/3 of the road accident patients in Pakistan had Traumatic Brain Injury (TBI). This puts immense burden on the emergency care of neurotrauma patients which involves accessibility of physicians, imaging facilities, medical equipment, supporting staff and equipped medical rooms. Patients' Aid-JPMC proposed a project to one of its charitable donors who helped to build a dedicated Neurotrauma facility at JPMC. The facility takes all kinds of complicated cases including road accidents and ruptures, which other hospitals are not willing to take due to its criminal and legal implications. This extensive facility includes 20 HDUs and 6 ICUs with ventilators, 2 Operation Theaters and all the medical equipment & staff needed to treat the patients.



In 2023/24:

82,837 New patients treated in OPD.

2,173 surgeries performed



OPD & Surgical Complex

Patients' Aid-JPMC in collaboration with JPMC and the Government of Sindh has constructed a medical complex comprising of 6 floors to increase surgical capacity of JPMC by 550 beds spread over an area of 320,000 sq. ft. This state-of-the-art building has 14 major and 4 minor operation theatres for multiple surgical procedures with cutting edge machinery and equipment. The building is an all-inclusive facility with waiting rooms for the attendants and visitors, as well as recovery rooms for the patients who have undergone procedures. It also includes meeting rooms, medical staff rooms, doctors' rooms and technically equipped educational rooms for conferences.

Within the surgical complex an OPD complex comprising 2 floors with 9 OPDs are operating which includes Physiotherapy, Surgical, Neurosurgery, Orthopaedic, ENT, General Medicine, Dermatology, Employees and Special Clinics. Approximately 6,000 patients visit the OPD Complex each day in the hope of getting quality treatment

Every OPD has separate male and female sitting area, waiting area for the attendants, beds, and medical equipment to provide necessary assistance. Specialized doctors, consultants and supporting staff is available in each OPD to cater to the individual needs of the patients.



In 2023/24:

419,076 Patients
treated in OPD
Complex in various
OPDs



Ophthalmology

Eyesight disability is three times more likely to occur in amongst the underprivileged communities. Patients' Aid-JPMC renovated and expanded the operations of Ophthalmology ward at JPMC. It introduced a contemporary OPD department for children and adults with a further classification for separate male and female areas. It also employed 4 qualified eye consultants for diagnosis of eye disorders and diseases. Vitrectomy machine, surgical microscopes, and pediatric lenses arranged at ophthalmic surgery wards were also provided by Patients' Aid Foundation.

In 2023/24:

54,744 Patients treated in OPD

3,491 patients admitted for further treatment.

Total surgeries performed 3,665





Obstetrics & Gynaecology

Patients' Aid-JPMC has been expanded the departmental capacity at Gynea & Obstetrics department at JPMC to cater to the rising number of women patients visiting the facility. Patients' Aid has constructed a new 14,000 Sq. Ft. Labor Ward and Operating Theatre block at JPMC. This new facility includes a 22-bed Labor Ward, 5 OPDs, a 4-bed Eclampsia Room, first stage Room, Recovery Room, and Sterilized Unit, all under one roof to provide safe and quality reproductive health services to the deserving women. Patients' Aid has also created a dedicated blood facility with technical staff where various types of blood is stored within the Gynea ward for timely supply during childbirth procedures. Recently neo-natal care unit is also established to address new-born ailments and save precious lives (NICU).



In 2023/24:

106,757 women treated in Gynea OPD.

33,811 women provided emergency treatment in Gynea Dept.

21,270 child birth deliveries performed.

9,607 Gynea surgeries performed.



PET-CT Cyclotron

PET-CT Cyclotron is able to detect the early onset of cancer before it is evident on other imaging tests and to enable early detection of cancer, Patients' Aid-JPMC in collaboration with the Government of Sindh has established the PET-CT Cyclotron facility at JPMC. It is the only facility in Pakistan providing free of cost PET-CT scanning for the marginalized cancer patients alleviating their sufferings and saving lives.

In 2023/24:
2,045 PET CT
performed





Department of Psychiatry & Behavioural Sciences

Socio-economic adversities, unstable political conditions, poverty and strained family relations, all have contributed to the psychological problems in Pakistan, especially in our masses. A very small percentage of psychiatric units are state-owned which further amplifies the mental problems of the less privileged classes. Recognizing this need, Patients' Aid-JPMC, with the generous commitment of its donor has constructed Department of Psychiatry and Behavioural Sciences at JPMC inaugurated in January 2024. The 120,000 sq. ft. facility is providing quality mental health services free of charge to deserving patients. This all-inclusive facility is spread over 4 floors, having 17 consulting rooms in its OPD, a pharmacy, 35 bedded psychiatric units for children, women and men, 35 bedded addiction treatment units, 10 consultant rooms, doctor offices and conference rooms for faculty to study cases and research.



January to June 2024
20,695 patients treated in
different segments of
Psychiatry dept.



Radiology

Patients' Aid helped to re-build the Radiology Department at JPMC and has equipped it with a wide range of cutting-edge diagnostic and therapeutic radiology equipment operated by experts. This facility provides free treatment to 2000 patients per day using state-of-the-art machinery and facilities including:

- 20 X-Ray Machines
- 2 Mammogram Machines
- 2 Endoscopy Facilities
- 3 MRI Machines
- 3 Echo Machines
- 3 CT Scan Machines
- 1 Angiography Facility
- 32 US Doppler
- 2 Dexa Scan Machines



In 2023/24:

186,475 patients provided in Radiological diagnostics.

Following diagnostic scans were performed:

Mammography	2,312
Dexa Scan	3,273
MRIs	38,369
CT Scans	70,659



Stroke Unit

Recently we have made operational a fully dedicated Stroke unit, specialized hospital ward dedicated to the care and treatment of patients who have experienced a stroke. These units are designed to provide comprehensive and coordinated care from a multidisciplinary team, with the aim of improving outcomes and reducing the risk of complications. Upon arrival, patients undergo a quick and thorough assessment to determine the type and severity of the stroke. Advanced imaging technology such as CT scans, MRI, and Doppler ultrasound is used to identify the location and extent of the stroke followed by detailed neurological examination to assess cognitive and motor functions.





Tomotherapy

Patients' Aid has extensively worked towards enhancing and upgrading radiographic facilities at JPMC. Patients' Aid-JPMC has been able to introduce latest radiographic equipment at JPMC through the help of its generous donors, one such equipment is Tomotherapy. The Tomotherapy System is among the most revolutionary radiotherapy innovations in the history of cancer treatment, completely redefining the standard for individualized and precise treatment of tumors anywhere in the body — while creating a new paradigm for patient comfort and quality of life. An advanced version of Tomotherapy has recently been installed for the treatment of prostate and breast cancer.

in 2023-24

329 Cancer patients treated.

7,395 Tomotherapy fractions (sessions) performed





Jamah Masjid

We at Patients' Aid not only believe in providing quality healthcare but the finest supplementary services for patients and their attendants to provide them maximum comfort throughout their treatment. For this reason, we have constructed a state-of-the-art Jamah Masjid having a capacity of accommodating approx. 3,000 worshippers at a time. The masjid is having separate women's area for wuzu and namaz offering and residential facility for the Imam and Muezzin.

Support Functions

The success of Patients' Aid is built not only on our frontline healthcare services but also on the exceptional performance of our support functions. These departments—Finance, Human Resources, Procurement, IT, Project Management, Resource Mobilization & Communications and Healthcare operations form the backbone of the organization, ensuring that we operate efficiently and effectively.

The outstanding performance of our support functions has been integral to our achievements over the past year. Their expertise and dedication have enabled Patients' Aid to operate seamlessly and efficiently, allowing us to focus on our core mission of providing high-quality healthcare to those in need. As we continue to grow and evolve, we are confident that these support functions will remain pivotal to our ongoing success and impact.



Fundraising and Marketing

At Patients' Aid, our ability to provide high-quality healthcare services to underserved communities relies heavily on the exceptional performance of our Fundraising and Marketing teams. These support functions are vital in securing the resources and visibility needed to sustain and expand our mission.

Enhanced donor engagement through personalized communication and recognition programs have helped us in cultivating strong relationships with our donors resulting in higher retention rates and increased recurring donations.

The Marketing team has played a pivotal role in raising awareness about our mission, programs, and impact. New marketing campaigns, fund raising events, conventional & digital media presence & public relation activities have significantly enhanced our visibility and engagement with various stakeholders. The focus is on creating brand awareness of Patients' Aid Revolution at JPMC engaging masses to Donate/ give Zakat generously.

کراچی ۽ دوست جناح کے ساتھ

BIKE A CAUSE
FOR THALASSEMIA PATIENTS AT JPMC
SAVE THE DATE
SUNDAY 25TH AUGUST, 2024

faysalbank PATIENTS' AID FOUNDATION JPMC

SPONSORS: SAPPHIRE, BICS, Jubilee, etc.

Pakistan reports 83,000 breast cancer cases annually. Of these, 40,000 women die.

Breast Cancer
AWARENESS MONTH
زندگی کو جانو

where Free, quality healthcare is everyone's right

Patients' Aid Revolution:

کراچی ۽ دوست جناح کے ساتھ

SURGICAL COMPLEX CYBERNIFE CRITICAL CARE

کراچی ۽ دوست جناح کے ساتھ
اپنا روز کا صدقہ پیشکش ایڈ فاونڈیشن کو دیں اور زندگیاں بچائیں

DONATE ONLINE: www.patientsaidjpmc.org / #donateonline
CASH COLLECTION: 0301-8278222

CHASING DREAMS WINNING GOLD

BIKE A CAUSE FOR THALASSEMIA PATIENTS

کراچی ۽ دوست جناح کے ساتھ

PATIENTS' AID FOUNDATION JPMC

اپنا روز کا صدقہ پیشکش ایڈ فاونڈیشن کو دیں اور زندگیاں بچائیں

DONATE ONLINE: www.patientsaidjpmc.org / #donateonline
CASH COLLECTION: 0301-8278222

"DISABILITY IS A MATTER OF PERCEPTION"

INTERNATIONAL DAY FOR DISABILITIES
NOVEMBER 3 2024

PATIENTS' AID FOUNDATION

MUHAMMAD FAHAD'S THALASSEMIA IS CURABLE
DONATE NOW!

BIKE A CAUSE FOR THALASSEMIA PATIENTS
SUNDAY 25TH AUGUST, 2024

PATIENTS' AID FOUNDATION

WORLD HEPATITIS DAY

KEEP YOUR LUNGS HEALTHY
12 NOV WORLD PNEUMONIA DAY

Did you know? Hepatitis is a life-changing solution, and it's free at JPMC thanks to Patients' Aid Foundation. Tap someone who should know about this disease! @HealthEducation

FREE MAMMOGRAMS AT JPMC

کراچی ۽ دوست جناح کے ساتھ

اپنا روز کا صدقہ پیشکش ایڈ فاونڈیشن کو دیں اور زندگیاں بچائیں

جشن آزادی مبارک کراچی ۽ دوست جناح کے ساتھ

PATIENTS' AID FOUNDATION

ROPOPITAN

Cyclists pedal in support of 'underserved' thalassaemia patient

BIKE A CAUSE FOR THALASSEMIA PATIENTS
SUNDAY 25TH AUGUST, 2024

PATIENTS' AID FOUNDATION

کراچی ۽ دوست جناح کے ساتھ

Your \$1 donation can save life of Millions.

دوست جناح کے ساتھ

DONATE ONLINE: www.patientsaidjpmc.org/donateonline

Saluting the Best Caregivers!
Happy Mother's Day

PATIENTS' AID FOUNDATION

BIKE A CAUSE FOR THALASSEMIA PATIENTS
SUNDAY 25TH AUGUST, 2024

PATIENTS' AID FOUNDATION

کراچی ۽ دوست جناح کے ساتھ

اپنا روز کا صدقہ پیشکش ایڈ فاونڈیشن کو دیں اور زندگیاں بچائیں

DONATE ONLINE: www.patientsaidjpmc.org/donateonline



Financial Data

Patients' Aid Foundation Financial Highlights

DESCRIPTION	FY 2023-24	FY 2022-23
Total Income	2,281.7	2,034.1
Total Expenditure	2,716.4	2,050.7
Net Assets	2,347.5	1,704

Non-Current Assets	9,551.1	6,026.7
Current Assets	4,333.7	5,595.3
Total Assets	13,884.9	11,622

Non-Current Liability	11,256.9	9,767.9
Current Liability	280.4	150.2
Total Liability	11,537.4	9,918.1

Restricted Net Assets	1,036.5	755.4
Un Restricted Net Assets	1,310.9	948.6
Total Net Assets	2,347.5	1,704

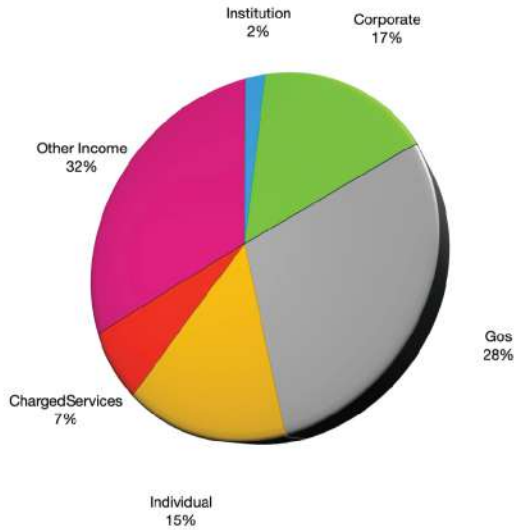
Patients' Aid Foundation

Financial Highlights for 2023-2024

INCOME - GENERAL AND CHARGED SERVICES	2023-24	2022-23
Donations & Contributions		
General Donations	413,171	515,278
General Zakat	339,348	450,397
Government of Sindh Grant	640,000	240,000
Charged Services		
Blood Screening	9,959	9,051
Main Laboratory	140,737	135,967
Eye Ward	1,831	3,545
	1,545,046	1,354,238
INVESTMENT INCOME		
General Fund	615,230	628,912
Endowment Fund	114,611	51,581
OTHER INCOME		
Scrap Sales	7,112	1,066
Exchange Gain / (Loss)	(295)	297
Gain / (Loss) on Disposal of Property & Equipment	-	(1,871)
	2,281,704	2,034,223
Earmarked to:		
General Fund	2,167,093	1,982,642
Endowment Fund	114,611	51,581
	2,281,704	2,034,223
RECEIPT INTO DEFERRED INCOME ACCOUNT		
Government of Sindh grant for Surgical Complex / Cyberknife / Cyclotron PET CT	-	1,804,185
Hilton Pharma grant for Medical Complex	1,132,061	109,968
Others	1,421,889	835,737
	2,553,950	2,749,890
OPERATING EXPENDITURE		
Program Expenses	1,671,297	1,271,894
Administrative Expenses	106,288	90,140
Marketing & Fund Raising Expenses	58,749	4,015
Depreciation	880,044	684,622
	2,716,378	2,050,671
CAPITAL EXPENDITURE ADDITION		
Operating Asset - Restricted Grants	2,625,424	329,477
Operating Asset - Unrestricted Grants	27,434	6,392
	2,652,858	335,869

Patients' Aid Foundation Financial Highlights for 2023-2024

INCOME

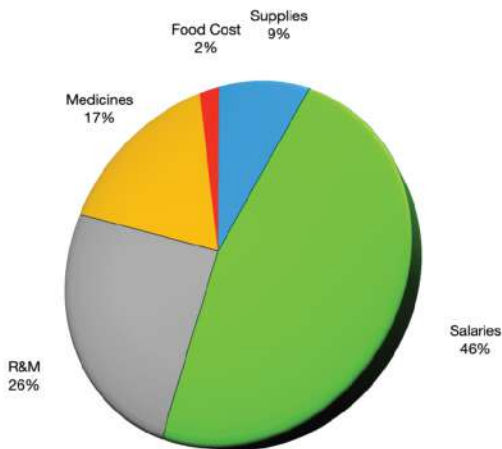


Funding Sources: A Snapshot

• Institution	2%
• Corporate.	17%
• Gos.	28%
• Individual.	15%
• Charged Services.	7%
• Other Income.	32%

Gross income in 2023-24 was 2,282 mn which is 12% Higher than income of 2022-23

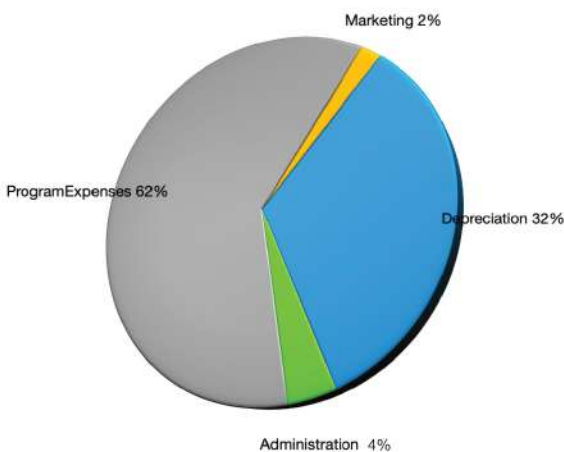
EXPENSE



Our Spending With Purpose

• Supplies	9%
• Salaries.	46%
• R&M	26%
• Medicines	17%
• Food Cost.	2%

COMPONENTS



Our Spending With Purpose

• Program Expenses	62%
• Depreciation	32%
• Administration	4%
• Marketing	2%

AUDIT & COMPLIANCE

At Patients' Aid, we place a high priority on maintaining transparency, accountability, and integrity in all our operations. Our robust audit and compliance processes are essential to ensuring that we meet these standards, safeguard our resources, and uphold the trust placed in us by our donors, partners, and the communities we serve. By continuously refining our audit and compliance processes, Patients' Aid is well-positioned to achieve its mission while adhering to the highest standards of integrity and ethical conduct.

EXTERNAL AUDIT

The external audit is a critical component of our financial governance, providing an independent evaluation of our financial statements and practices. This is performed by A. F. Ferguson & Company, Chartered Accountants, an affiliate of PwC international.

After a thorough review process, we have decided to change our audit partner to enhance the objectivity and quality of our audits. This decision was made to bring fresh perspectives, expertise, and renewed rigor to our financial oversight. It aligns with our governance best practices and regulatory guidelines, which recommend the periodic rotation of auditors to maintain independence and prevent complacency.

INTERNAL AUDIT

Our internal audit function plays a crucial role in continuously monitoring and improving our internal processes and controls. This function has been outsourced to another Chartered Accountants firm. Internal audits are conducted regularly throughout the year, covering various aspects of our operations, including finance, procurement, human resources, and program delivery. These audits assess compliance with policies, procedures, regulatory requirements and process improvements

COMPLIANCE

Maintaining compliance with legal and regulatory requirements is a fundamental aspect of our operations. We have developed comprehensive policies and procedures that govern our operations. These policies are regularly reviewed and updated to reflect changes in laws, regulations, and best practices. We continuously monitor compliance across all levels of the organization. Any potential compliance issues are reported and addressed promptly to mitigate risks.

ISLAMIC SHARIA AUDIT

At Patients' Aid, we are dedicated to ensuring that our operations and financial practices align with the ethical principles and guidelines of Islamic Sharia. The implementation of a Sharia audit is a crucial component of this commitment, providing assurance that our activities comply with Islamic law and principles so to verify that the use of funds for charitable activities aligns with the principles of zakat and sadaqah (voluntary charity), and that these activities are conducted in a manner that benefits those in need, as prescribed by Sharia. This audit is performed by Alhamd Sharia Advisory Services (private) Limited

Future Goals

- Establishment of Cancer Institute
- Trauma Center close to Accident & Emergency
- Completion of Medical Tower building
- Completion of Government Wards building
- Activation of Hospital Information Management System
- Replacement of current MRI/CT scan films by digitized Picture and Archival
- Communication System (PACS)
- Implementation of ERP to support integrated finance, HR, budgeting, procurement and inventory management
- Expand fund raising in USA/UK through localized Chapters
- Diversify donor base by attracting small donations from larger chunk of population through aggressive marketing campaign

Pledge Your Support!



DONATION ACCOUNT

TITLE: PATIENTS AID FOUNDATION
BRANCH: GARNET CENTRE
KHAYABAN-E-JAMI CLIFTON, KARACHI
ACCOUNT NO: 0113098588011
CURRENCY: PAK RUPEE
IBAN CODE: PK76AIIN0000113098588011
SWIFT CODE: AIINPKKA

ZAKAT ACCOUNT

TITLE: PATIENTS AID FOUNDATION
BRANCH: GARNET CENTRE
KHAYABAN-E-JAMI CLIFTON, KARACHI
ACCOUNT NO: 0113098587019
CURRENCY: PAK RUPEE
IBAN CODE: PK88AIIN0000113098587019
SWIFT CODE: AIINPKKA



DONATION ACCOUNT

TITLE: PATIENTS AID FOUNDATION
BRANCH: HEAD OFFICE, I.I. CHUNDRIGAR
ROAD, KARACHI.
ACCOUNT NO: 55055001663114
CURRENCY: PAK RUPEE
IBAN CODE: PK83ALFH55055001663114
SWIFT CODE: PK83ALFH



DONATION ACCOUNT

TITLE: PATIENTS AID FOUNDATION
BRANCH: ISLAMIC BRANCH, PH V, DHA, KHI
ACCOUNT NO: 5014006900073301
CURRENCY: PAK RUPEE
IBAN CODE: PK22BAHL5014006900073301
SWIFT CODE: BAHLPKKA

ZAKAT ACCOUNT

TITLE: PATIENTS AID FOUNDATION
BRANCH: ISLAMIC BRANCH, PH V, DHA, KHI
ACCOUNT NO: 5014006900073302
CURRENCY: PAK RUPEE
IBAN CODE: PK92BAHL5014006900073302
SWIFT CODE: BAHLPKKA



DONATION ACCOUNT

TITLE: PATIENTS AID FOUNDATION
BRANCH: DEHLI COLONY SUB BRANCH, KHI
ACCOUNT NO: 106200099030136
CURRENCY: PAK RUPEE
IBAN CODE: PK32BKIP0106200099030136
SWIFT CODE: BKIPPKKA

ZAKAT ACCOUNT

TITLE: PATIENTS AID FOUNDATION
BRANCH: DEHLI COLONY SUB BRANCH, KHI
ACCOUNT NO: 106200099030137
CURRENCY: PAK RUPEE
IBAN CODE: PK05BKIP0106200099030137
SWIFT CODE: BKIPPKKA



DONATION ACCOUNT

TITLE: PATIENTS AID FOUNDATION
BRANCH: GIZRI BRANCH, KARACHI
ACCOUNT NO: 0031534060
CURRENCY: PAK RUPEE
IBAN CODE: PK40DUIB0000000031534060
SWIFT CODE: DUIBPKKA

ZAKAT ACCOUNT

TITLE: PATIENTS AID FOUNDATION
BRANCH: GIZRI BRANCH, KARACHI
ACCOUNT NO: 0031534061
CURRENCY: PAK RUPEE
IBAN CODE: PK13DUIB0000000031534061
SWIFT CODE: DUIBPKKA



DONATION ACCOUNT

TITLE: PATIENTS AID FOUNDATION
BRANCH: ABDULLAH HAROON ROAD,
KARACHI.
ACCOUNT NO: 0330000110545001
CURRENCY: PAK RUPEE
IBAN CODE: PK19FAYS0330000110545001
SWIFT CODE: FAYSPKKA

ZAKAT ACCOUNT

TITLE: PATIENTS AID FOUNDATION
BRANCH: DHA PHASE 1, MAIN KORANGI
ROAD, KARACHI.
ACCOUNT NO: 3400307900089200
CURRENCY: PAK RUPEE
IBAN CODE: PK19FAYS3400307900089200
SWIFT CODE: FAYSPKKA



DONATION ACCOUNT

TITLE: PATIENTS AID FOUNDATION
BRANCH: IBB-DHA PHASE IV, KH-E-JAMI ROAD,
DEFENCE, KARACHI.
ACCOUNT NO: 5001-70003228-51
CURRENCY: PAK RUPEE
IBAN CODE: PK71HABB0050017000322851
SWIFT CODE: HABBPKKA

Pledge Your Support!

HABIBMETRO

DONATION ACCOUNT

TITLE: PATIENTS AID FOUNDATION
BRANCH: KORANGI INDUSTRIAL BRANCH, KHI
ACCOUNT NO: 9964-2871403319-69
CURRENCY: PAK RUPEE
IBAN CODE: PK77MPBL9964287140331969
SWIFT CODE: MBPLPKKA

ZAKAT ACCOUNT

TITLE: PATIENTS AID FOUNDATION
BRANCH: KORANGI INDUSTRIAL BRANCH, KHI
ACCOUNT NO: 9964-2871403319-76
CURRENCY: PAK RUPEE
IBAN CODE: PK82MPBL9964287140331976
SWIFT CODE: MBPLPKKA



Meezan Bank
The Premier Islamic Bank

DONATION ACCOUNT

TITLE: PATIENTS AID FOUNDATION
BRANCH: GIZRI CHAUDHRY, KHALIQ-UZ-ZAMAN
COLONY, CLIFTON, KARACHI.
ACCOUNT NO: 0101408356
CURRENCY: PAK RUPEE
IBAN CODE: PK59MEZN0001670101408356
SWIFT CODE: MEZNPCKA

ZAKAT ACCOUNT

TITLE: PATIENTS AID FOUNDATION
BRANCH: GIZRI CHAUDHRY, KHALIQ-UZ-ZAMAN
COLONY, CLIFTON, KARACHI.
ACCOUNT NO: 0101408350
CURRENCY: PAK RUPEE
IBAN CODE: PK27MEZN0001670101408350
SWIFT CODE: MEZNPCKA



DONATION ACCOUNT

TITLE: PATIENTS AID FOUNDATION
BRANCH: ISLAMIC BANKING BRANCH,
KHAYABAN-E-ITTEHAD, KARACHI.
ACCOUNT NO: 53015678796100
CURRENCY: PAK RUPEE
IBAN CODE: PK41SIND0053015678796100
SWIFT CODE: PK41SIND00

For donation in United States

We are pleased to announce that
Patients Aid Foundation has now been registered in the United States of America
As a non profit under IRC Section 501(c)(3)

"Friend of Patients Aid Foundation"

Taxpayer ID Number: 88-3869840

By the Department of the Treasury Internal Revenue Service
Tax Exempt and Government Entities

Contact Person

Dr. Muhammad Malik
Cell: +1 (516) 467-7381
Email: mmalikx7@gmail.com

Mr. Shehzad Habib
Cell: +1 (917) 686-3674
Email: shabib@manhattanstrategy.com







PATIENTS' AID
FOUNDATION
JPMC

Basement, OPD & Surgical Complex, Jinnah Postgraduate Medical Centre
021-99223875, 021-99223900-01, 0301-827 8222

  patientsaidjpmc |   patientsaidfoundation

www.patientsaidjpmc.org